

**SECOND AMENDMENT TO SPECIAL DISTRICT PUBLIC DISCLOSURE DOCUMENT**

**SLC METROPOLITAN DISTRICT NO. 2**

As required pursuant to Section 32-1-104.8 of the Colorado Revised Statutes (“**C.R.S.**”), SLC Metropolitan District No. 2 (the “**District**”) recorded its Special District Public Disclosure Document on December 4, 2019 in the real property records of Arapahoe County at Reception Number D9132604 and that certain First Amendment to the Special District Public Disclosure Document on December 29, 2022 at Reception Number E2121437 (“**Public Disclosure Document**”),

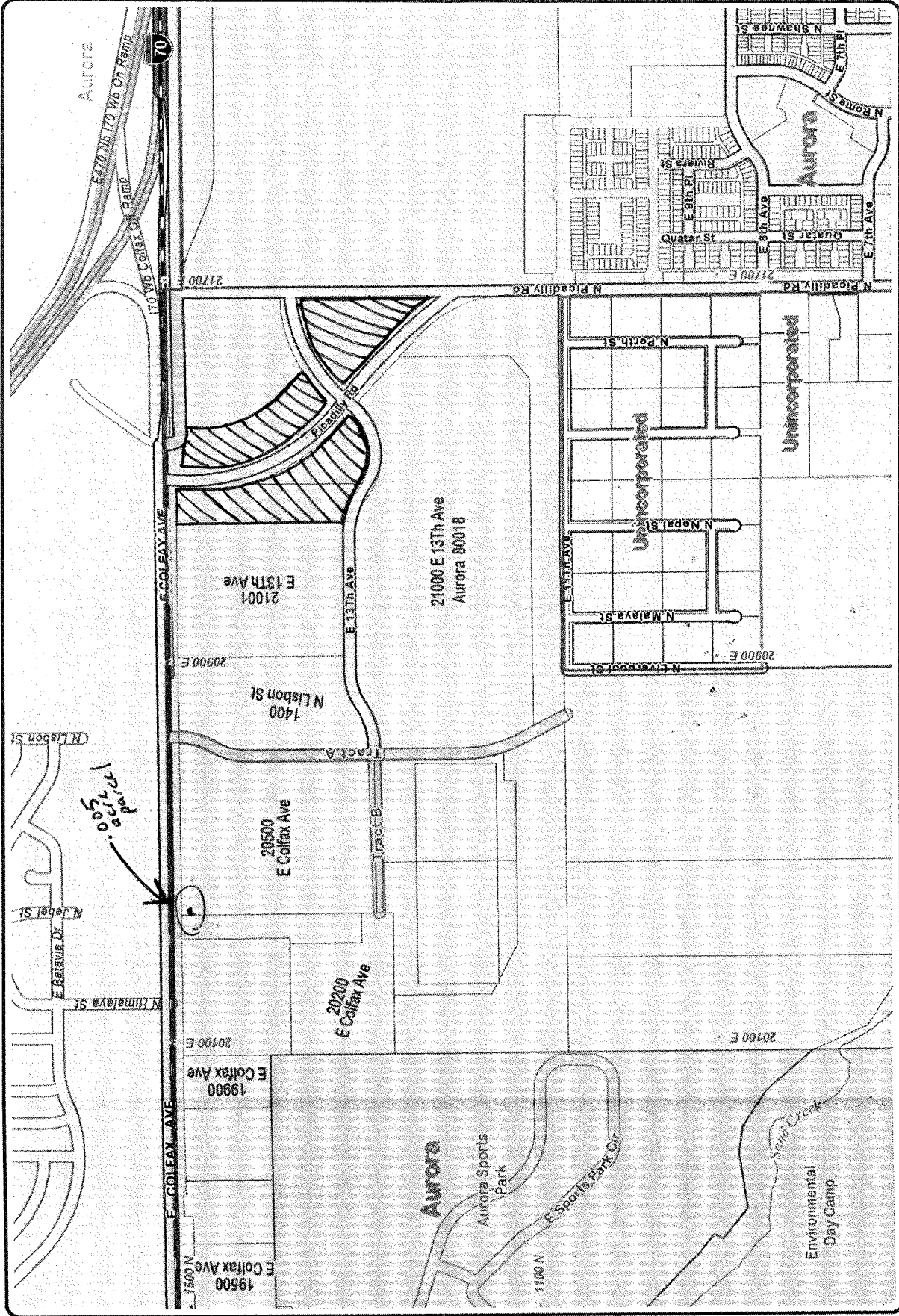
The District has changed its boundaries pursuant to Section 32-1-401, *et. Seq.*, C.R.S. and/or Section 32-1-501, *et. Seq.*, C.R.S.

Exhibit A to the Public Disclosure Document is hereby deleted in its entirety, and substituted in lieu thereof shall be **Exhibit 1**, an updated boundary map of the District, attached hereto and incorporated herein.

Dated this 21<sup>st</sup> day of January, 2025.

**EXHIBIT 1**

District Map



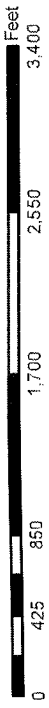
Generated by Arapahoe County's ArapaMAP



Map Location

ARAPAHO COUNTY MAKES NO REPRESENTATION OR WARRANTY AS TO THE ACCURACY OF THIS MAP OR THE DATA THAT IT DISPLAYS. ARAPAHO COUNTY ASSUMES NO RESPONSIBILITY FOR ANY ERRORS OR OMISSIONS. THIS MAP IS NOT A LEGAL DOCUMENT. IT IS INTENDED TO SERVE AS AN AID IN GRAPHIC REPRESENTATION ONLY.

Map Generated On: 12/17/2024



SLC MD No. 2

Not to scale